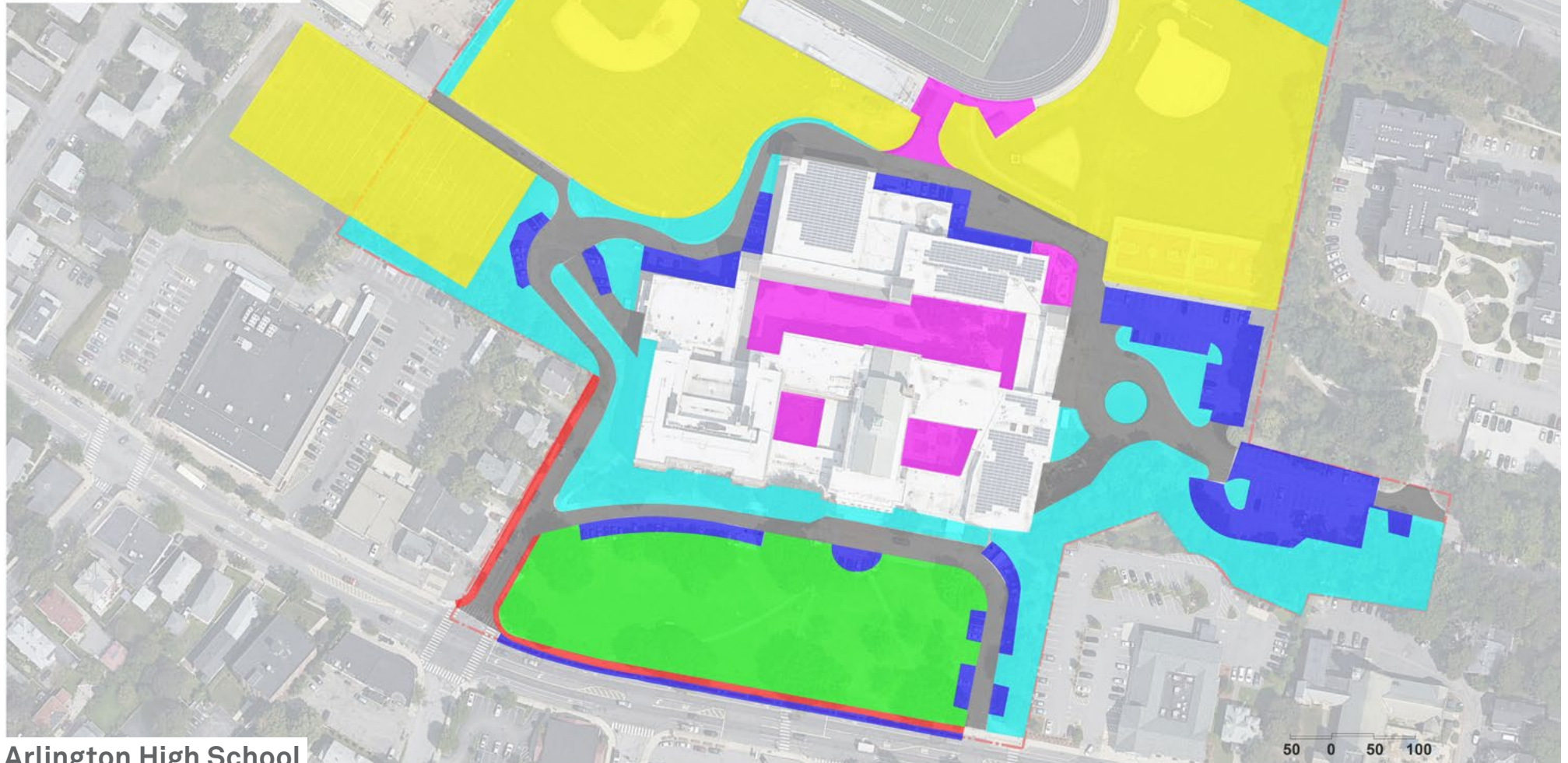


# AHS EXISTING SITE PLAN OPEN SPACE DIAGRAM

## LEGEND

-  MASS AVE. OPEN SPACE
-  FIELD
-  PARKING LOT
-  ROADWAY
-  PROGRAMMABLE / ACTIVE OPEN SPACE
-  PASSIVE OPEN SPACE
-  SIDEWALK



**Arlington High School**

Arlington, MA

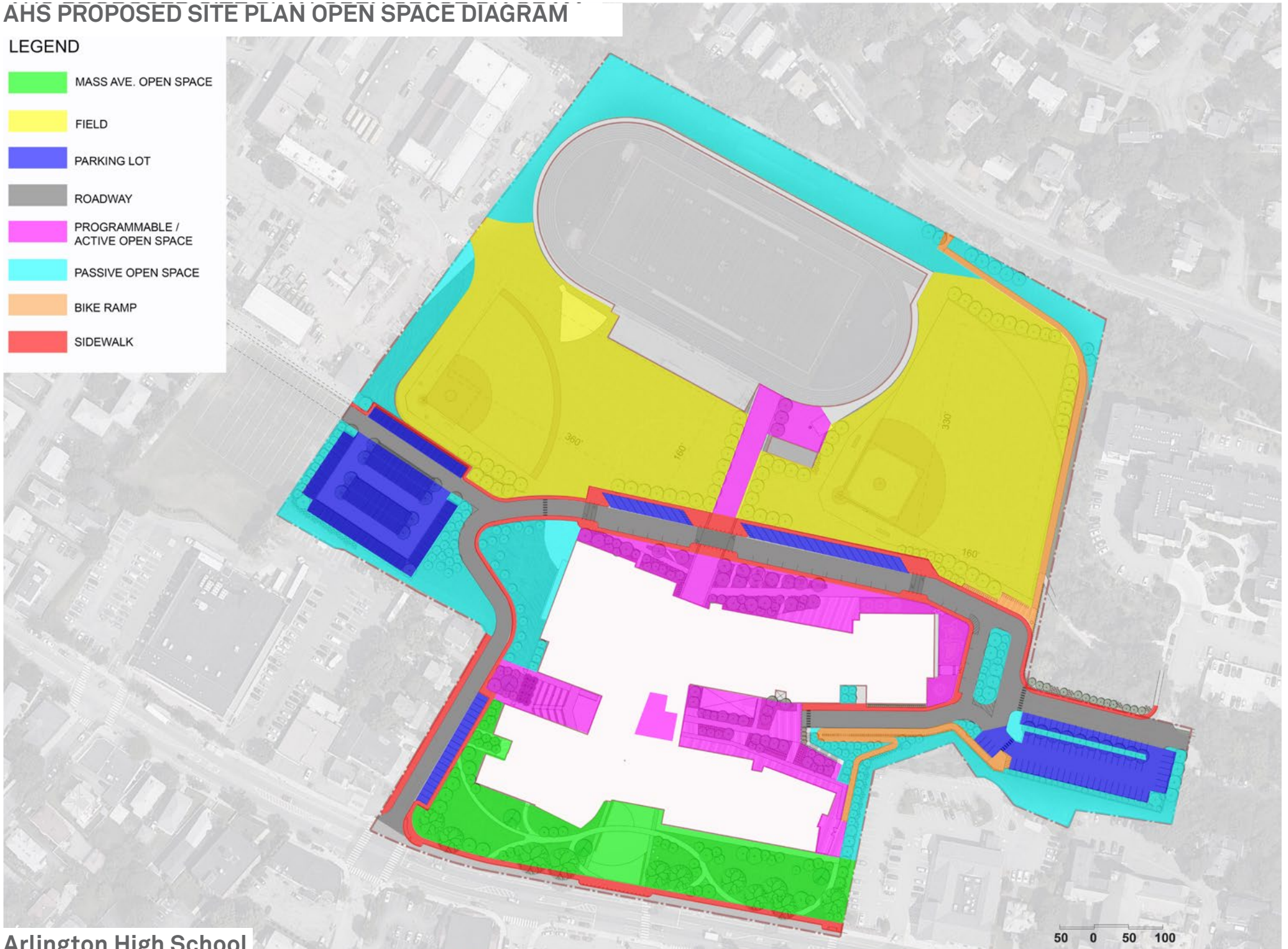
02-25-2019

HMFH ARCHITECTS

# AHS PROPOSED SITE PLAN OPEN SPACE DIAGRAM

## LEGEND

- MASS AVE. OPEN SPACE
- FIELD
- PARKING LOT
- ROADWAY
- PROGRAMMABLE / ACTIVE OPEN SPACE
- PASSIVE OPEN SPACE
- BIKE RAMP
- SIDEWALK



**Arlington High School**

Arlington, MA

02-25-2019

HMFH ARCHITECTS

## ARLINGTON HIGH SCHOOL OPEN SPACE COMPARISON

CATEGORY	EXISTING	PROPOSED	CHANGE	CHANGE IN %
<b>Building Footprint</b>	<b>128368</b>	<b>144020</b>	<b>15652 SF</b>	<b>12.2%</b>
	128368	144020		
<b>Mass Ave. Open Space</b>	<b>91282</b>	<b>63489</b>	<b>-27793 SF</b>	<b>-30.4%</b>
	91282	63489		
<b>Ball Field and Recreational Field</b> (existing includes 28,597 SF of practice field on future DPW site)	<b>271297</b>	<b>249482</b>	<b>-21815 SF</b>	<b>-8.0%</b>
Baseball field and surrounding area	107292	129376		
Softball field and surrounding area	108739	120106		
Peirce Practice field	55266			
<b>Parking</b>	<b>61344</b>	<b>58324</b>	<b>-3020 SF</b>	<b>-4.9%</b>
	61344	58324		
<b>Roadway</b>	<b>85268</b>	<b>63689</b>	<b>-21579 SF</b>	<b>-25.3%</b>
	85268	63689		
<b>Programmable / Active Open Space</b>	<b>38136</b>	<b>75985</b>	<b>37849 SF</b>	<b>99.2%</b>
Courtyard	29301	19355		
Open space abutting building	0	26303		
Pre-school play	2662	7117		
Sports field related	6173	11270		
Outdoor amphitheater	0	9193		
Roof Deck	0	2747		
<b>Passive Space</b>	<b>167469</b>	<b>122327</b>	<b>-45142 SF</b>	<b>-27.0%</b>
	167469	122327		

## ARLINGTON HIGH SCHOOL OPEN SPACE COMPARISON

CATEGORY	EXISTING	PROPOSED	CHANGE	CHANGE IN %
<b>Sidewalk</b>	<b>9026</b>	<b>31176</b>	<b>22150 SF</b>	<b>245.4%</b>
	9026	31176		
<b>Bike Ramp</b>	<b>0</b>	<b>14374</b>	<b>14374 SF</b>	<b>N/A</b>
	0	14374		
<b>Parking Space</b>	<b>230</b>	<b>226</b>	<b>-4</b>	<b>-1.7%</b>
on site	205	226		
on Mass Ave	25			
<b>Bike Storage Space</b>	<b>Approx. 60</b>	<b>100</b>	<b>Approx. 40</b>	<b>66.7%</b>
	Approx. 60	100		
<b>Overall Open Space</b> (existing includes 28,597 SF of practice field on future DPW site)	<b>568184</b>	<b>511283</b>	<b>-56901 SF</b>	<b>-10.0%</b>
Mass Ave. Open Space	91282	63489		
Ball Field and Recreational Field	271297	249482		
Programmable / Active Open Space	38136	75985		
Passive Space	167469	122327		
<b>Overall Roadway and Parking</b>	<b>146612</b>	<b>122013</b>	<b>-24599 SF</b>	<b>-16.8%</b>
Parking	61344	58324		
Roadway	85268	63689		
<b>Overall Pedestrian / Bicycle Space</b>	<b>9026</b>	<b>45550</b>	<b>36524 SF</b>	<b>404.7%</b>
Sidewalk	9026	31176		
Bike Ramp	0	14374		