

State Test Reporting

Arlington Public Schools
2016

Presented by: Dr. Laura Chesson, Assistant Superintendent

Introduction

- Charts for Grades 6 – 8 have been updated to map PARCC results to equivalent MCAS results in order to compare 2016 results to previous years.
- Elementary charts give indication of how well PARCC levels 4 and 5 map/do not map to Proficient/Advanced on MCAS
- Overall results remain fairly stable despite new test .

Results

- ELA Results
- Math Results
- Science Results

2016 ELA

.

Student Growth Percentile By Grade

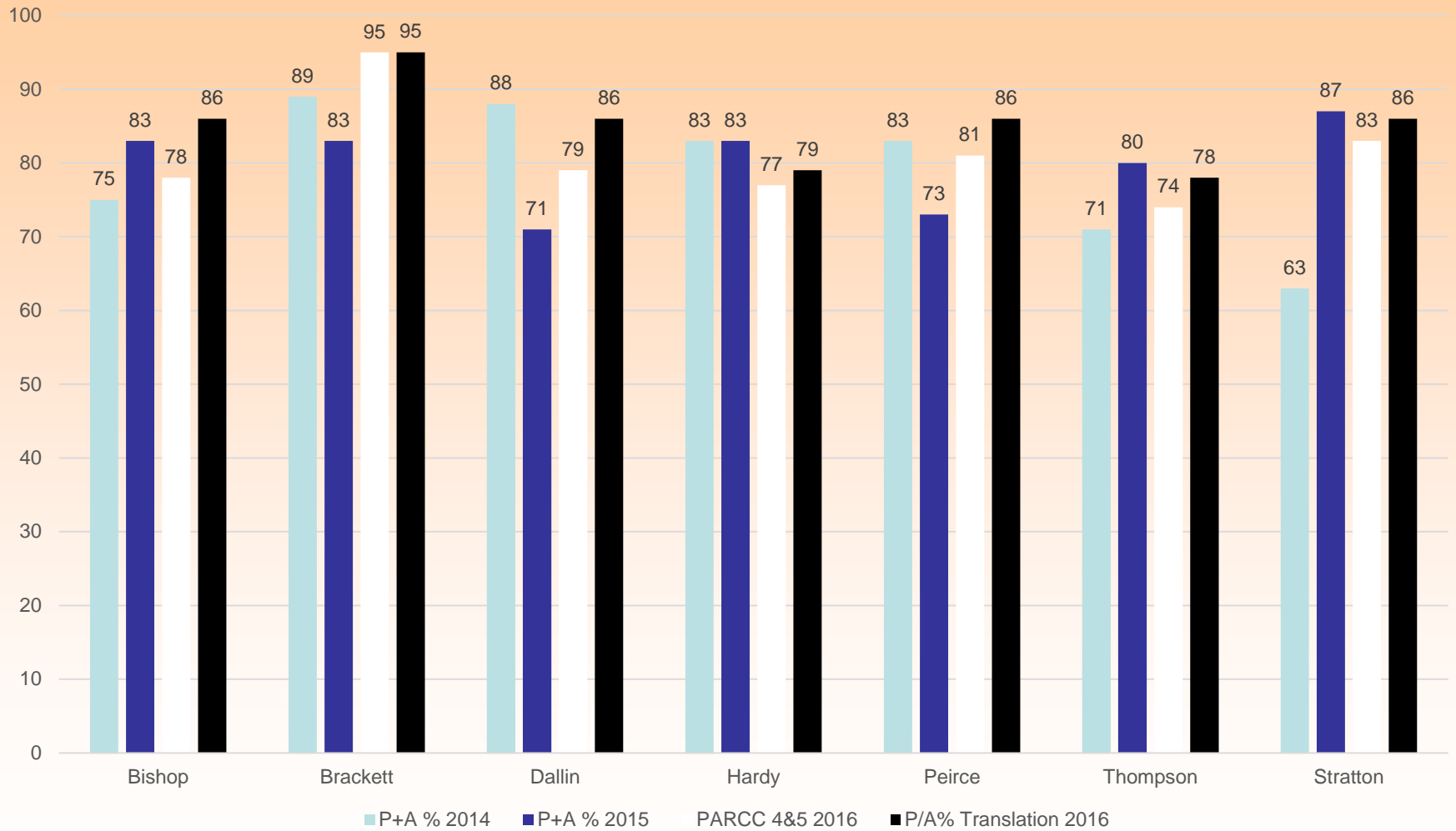
Target = 50

	ELA	MATH
Grade 4	56	43
Grade 5	64	46
Grade 6	36	46
Grade 7	28	46
Grade 8	47	42
Grade 10	43	49

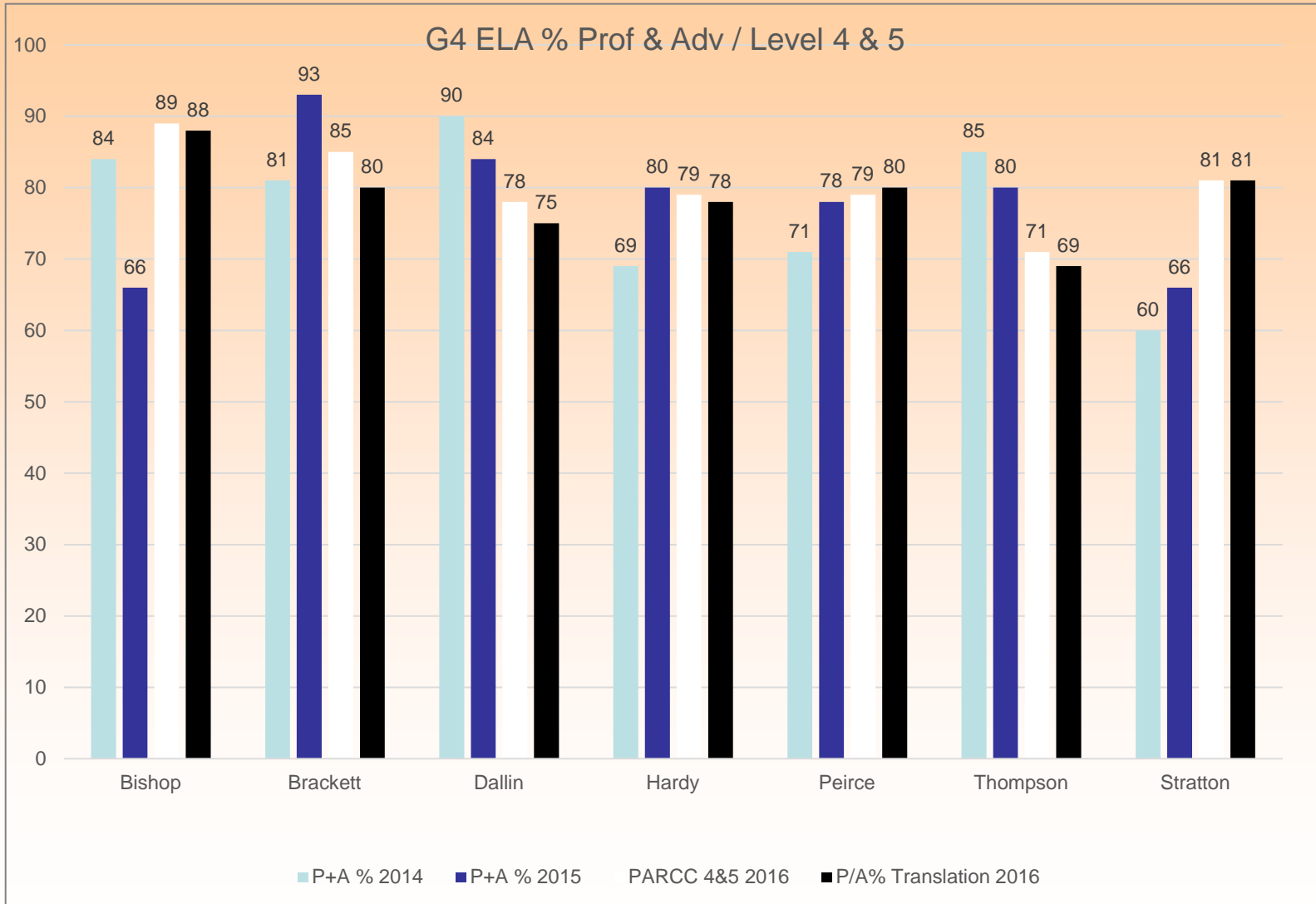
Margin of error is +/- 20 to 30 points depending on source.

Grade 3 ELA 2014 - 2016

G3 ELA % Prof & Adv / Level 4 & 5



Grade 4 ELA 2014 - 2016

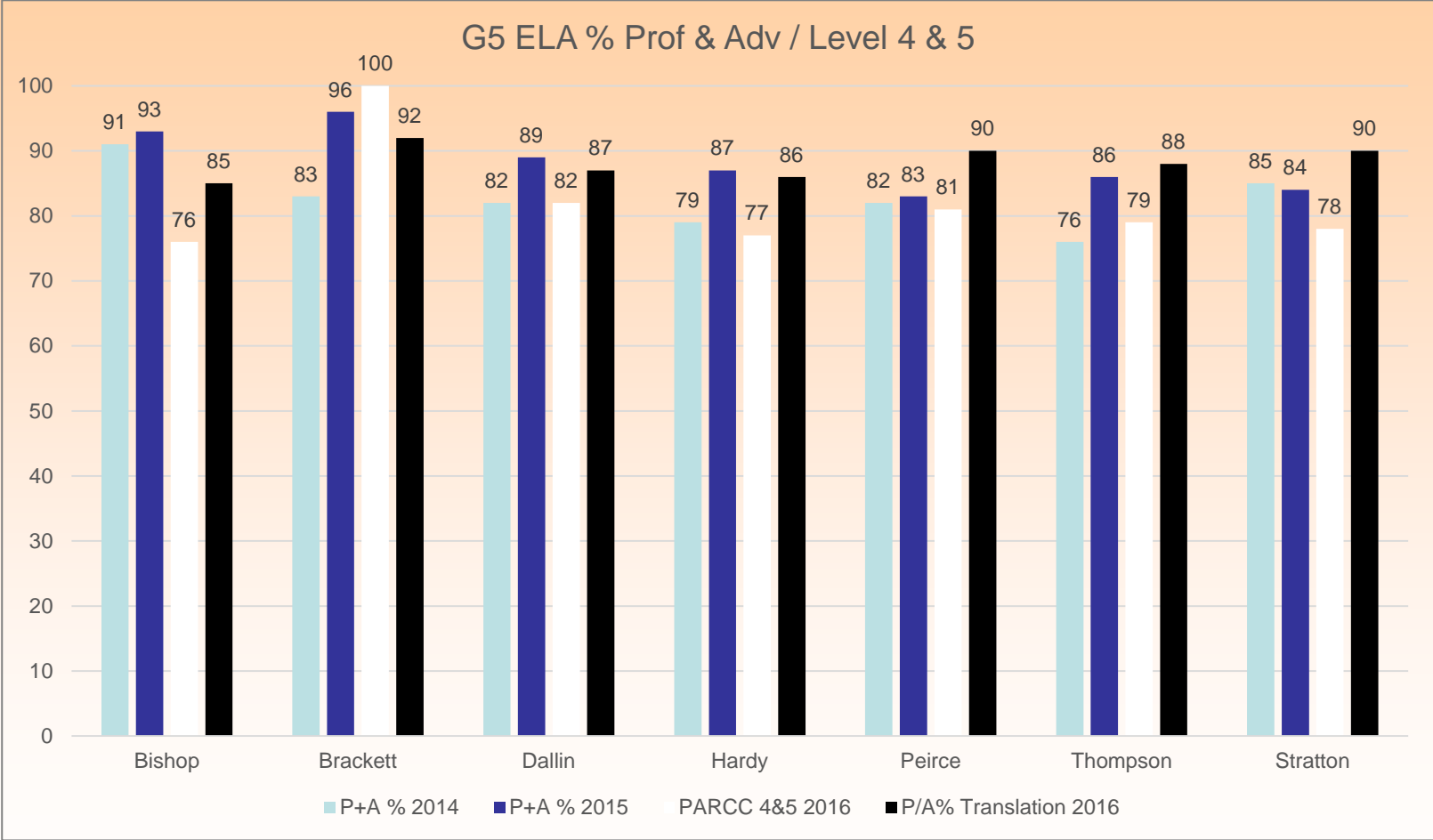


Grade 4 ELA SGP

	2014	2015	2016
Bishop	71	48	61
Brackett	65	69	57.5
Dallin	64	54	48
Hardy	57	58	53
Peirce	59.5	59	61
Thompson	77.5	82.5	48
Stratton	45	57	65

Margin of error is +/- 20 to 30 points depending on source.

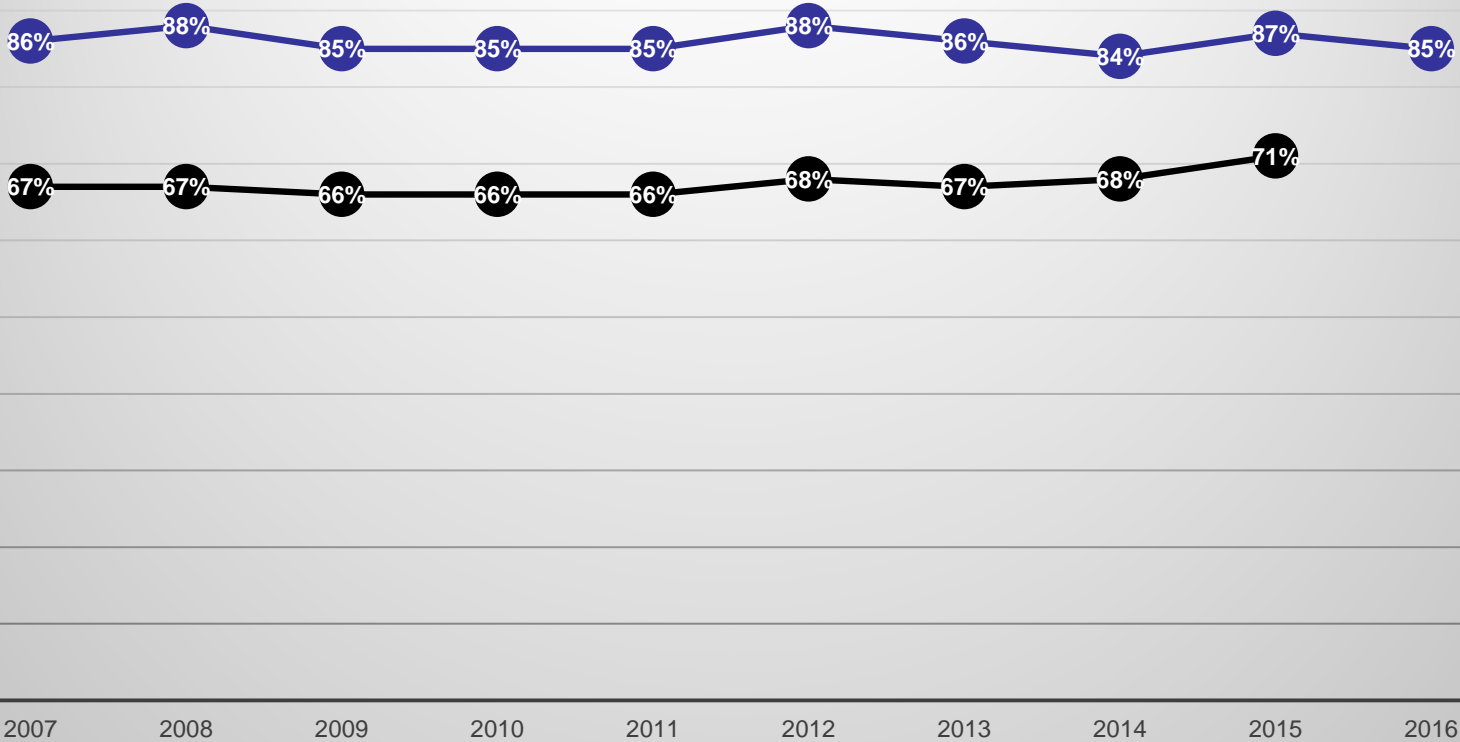
G5 ELA 2014 -2016



Grade 5 ELA SGP

	2014	2015	2016
Bishop	71	77.5	66
Brackett	42	44.5	66
Dallin	51	58.5	63.5
Hardy	56	61.5	64
Peirce	63	64	67.5
Thompson	52.5	31.5	60
Stratton	53	58	60

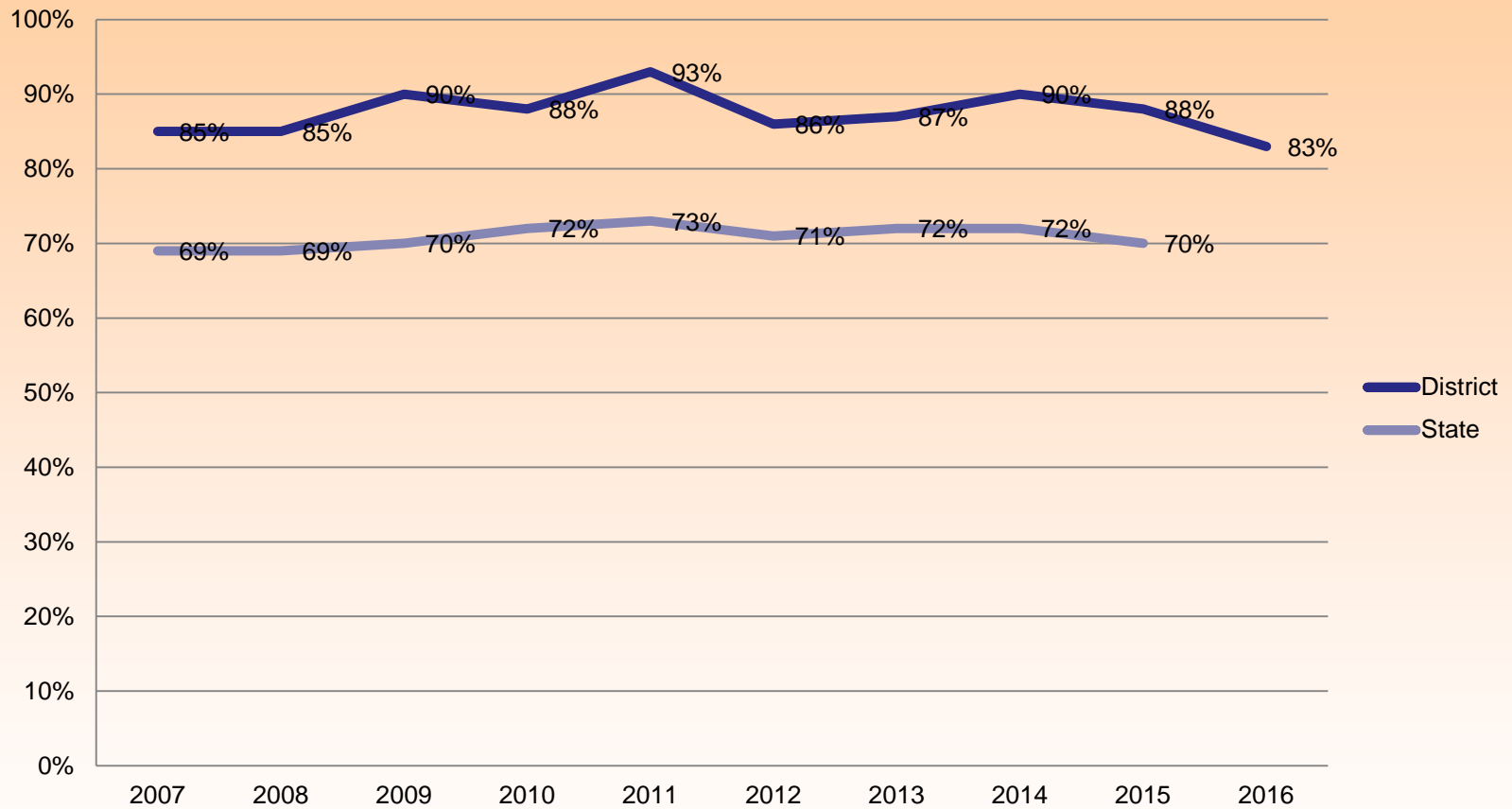
District vs. State ELA Grade 6 Proficient & Advanced



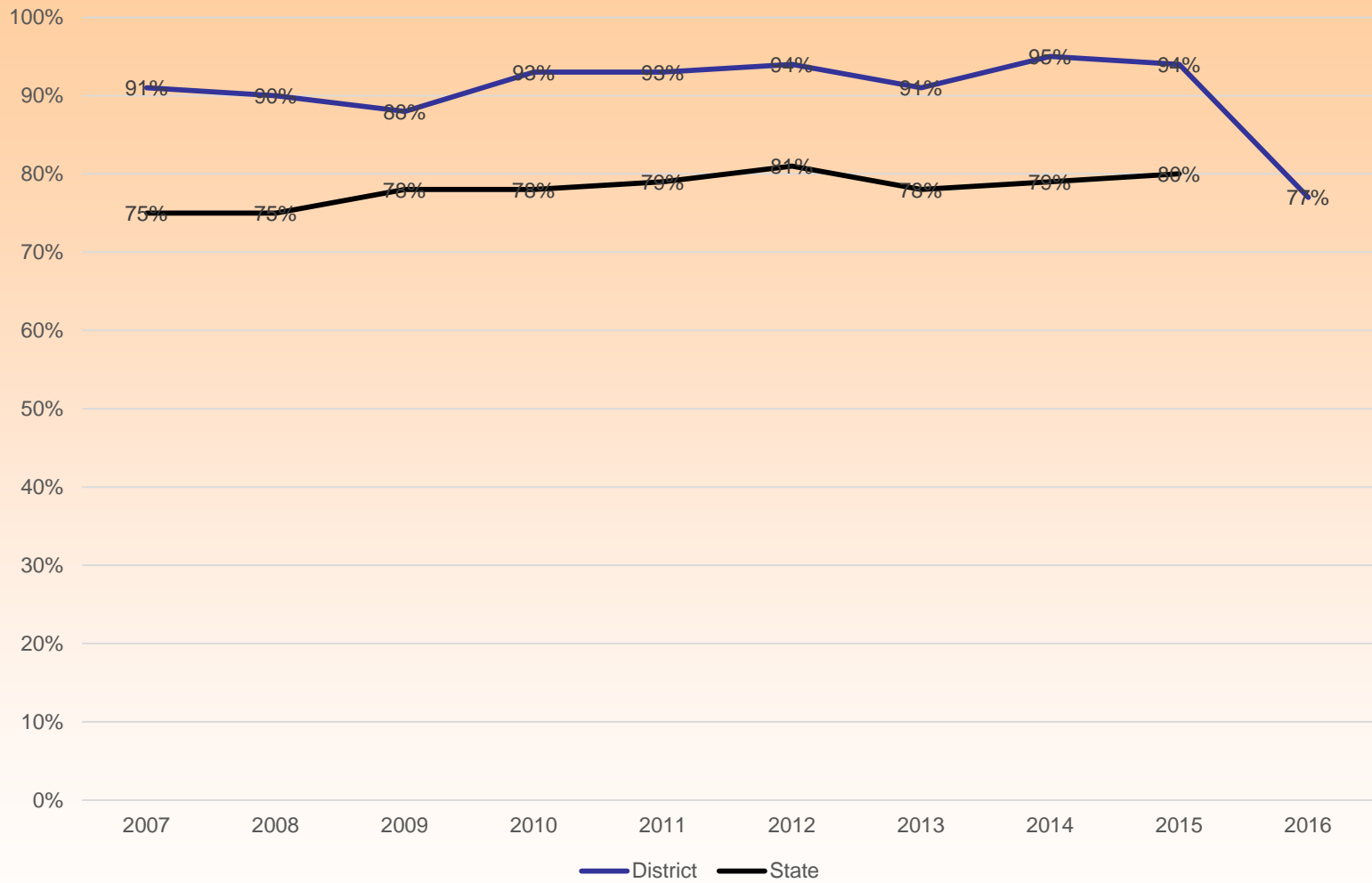
Axis Title

● ELA 6th ● State

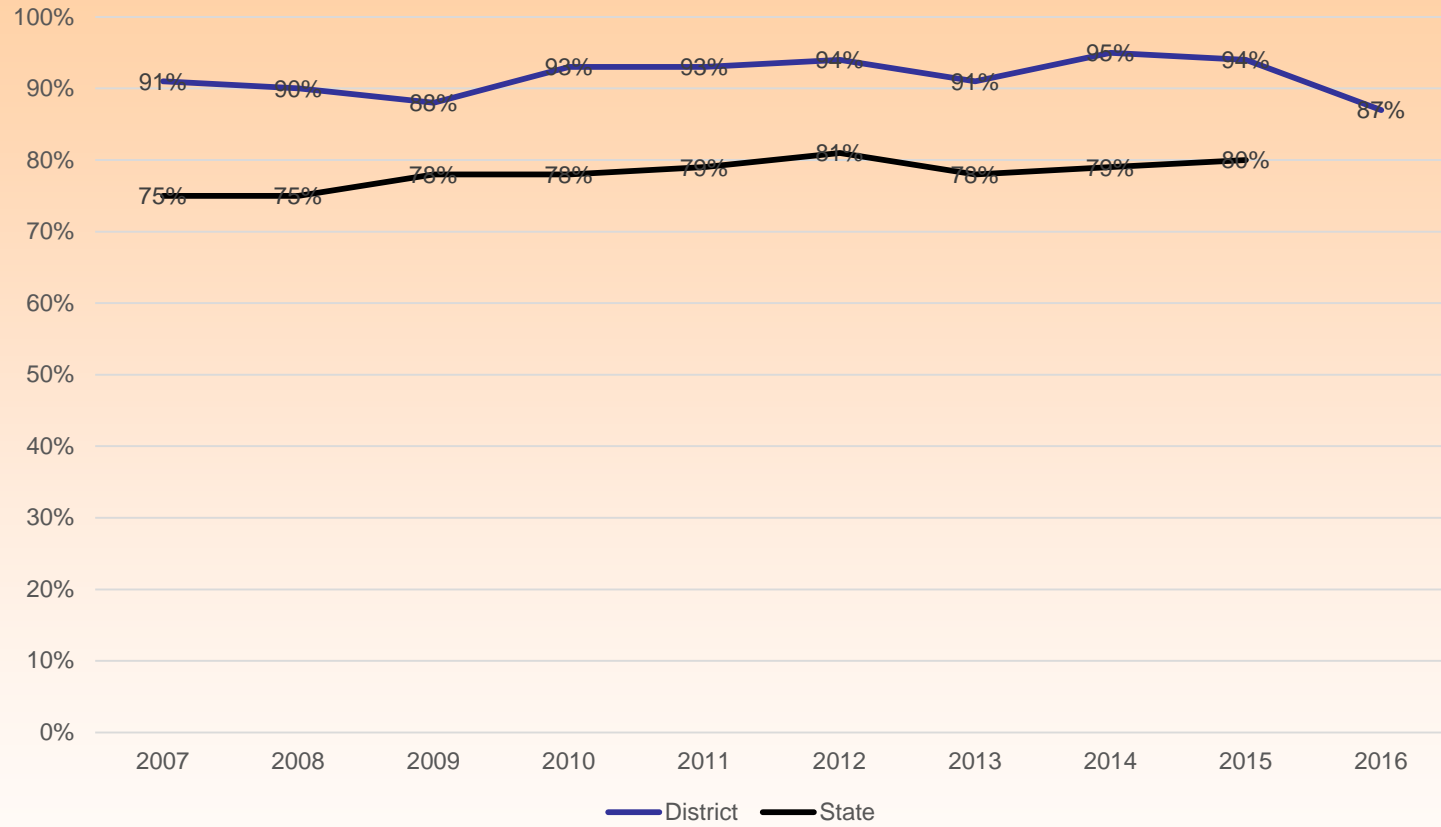
District vs. State ELA Grade 7 Percent Proficient & Advanced



District vs State 8th Grade ELA Prof & Advanced

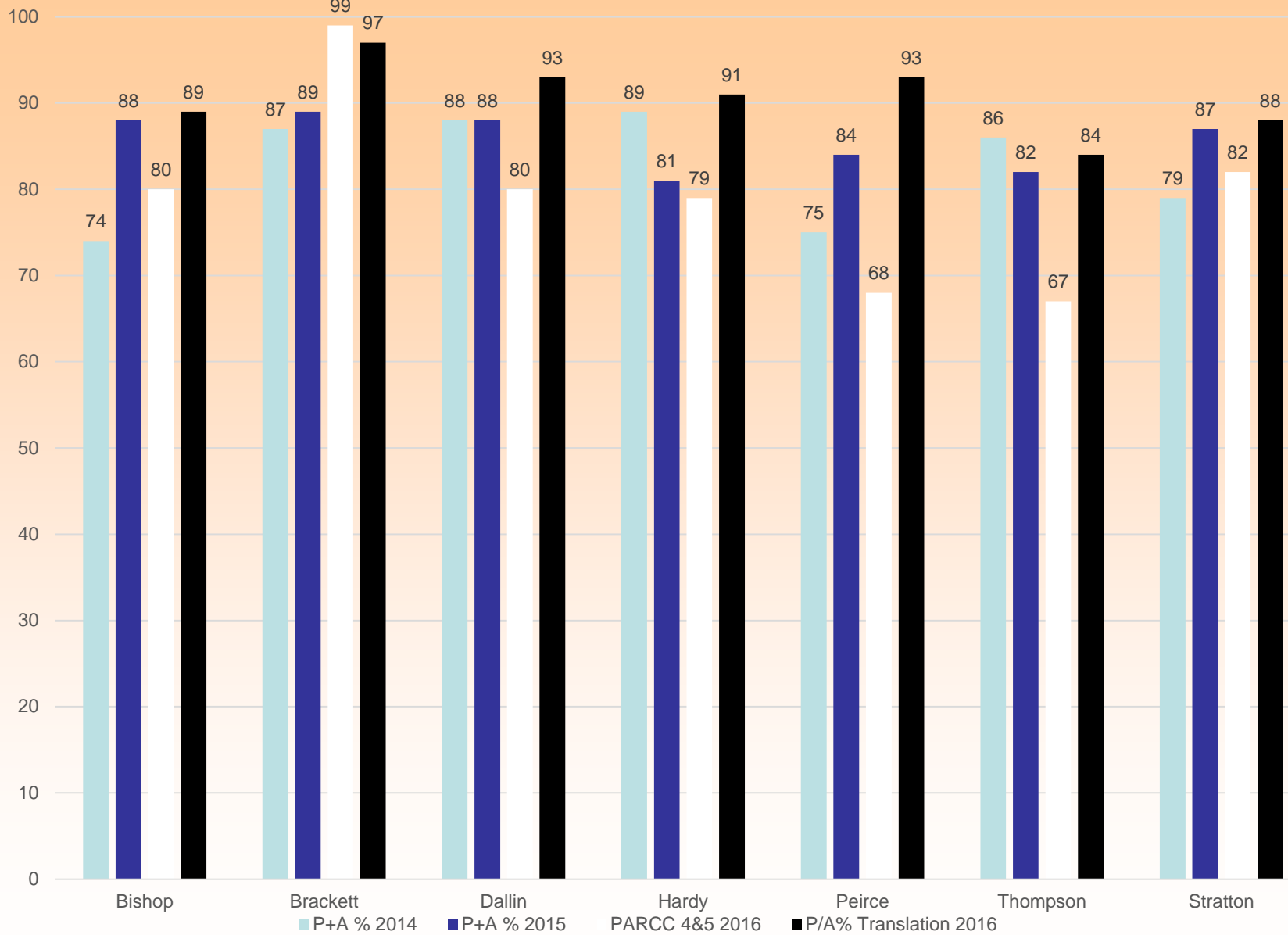


District vs State 8th Grade ELA Prof & Advanced

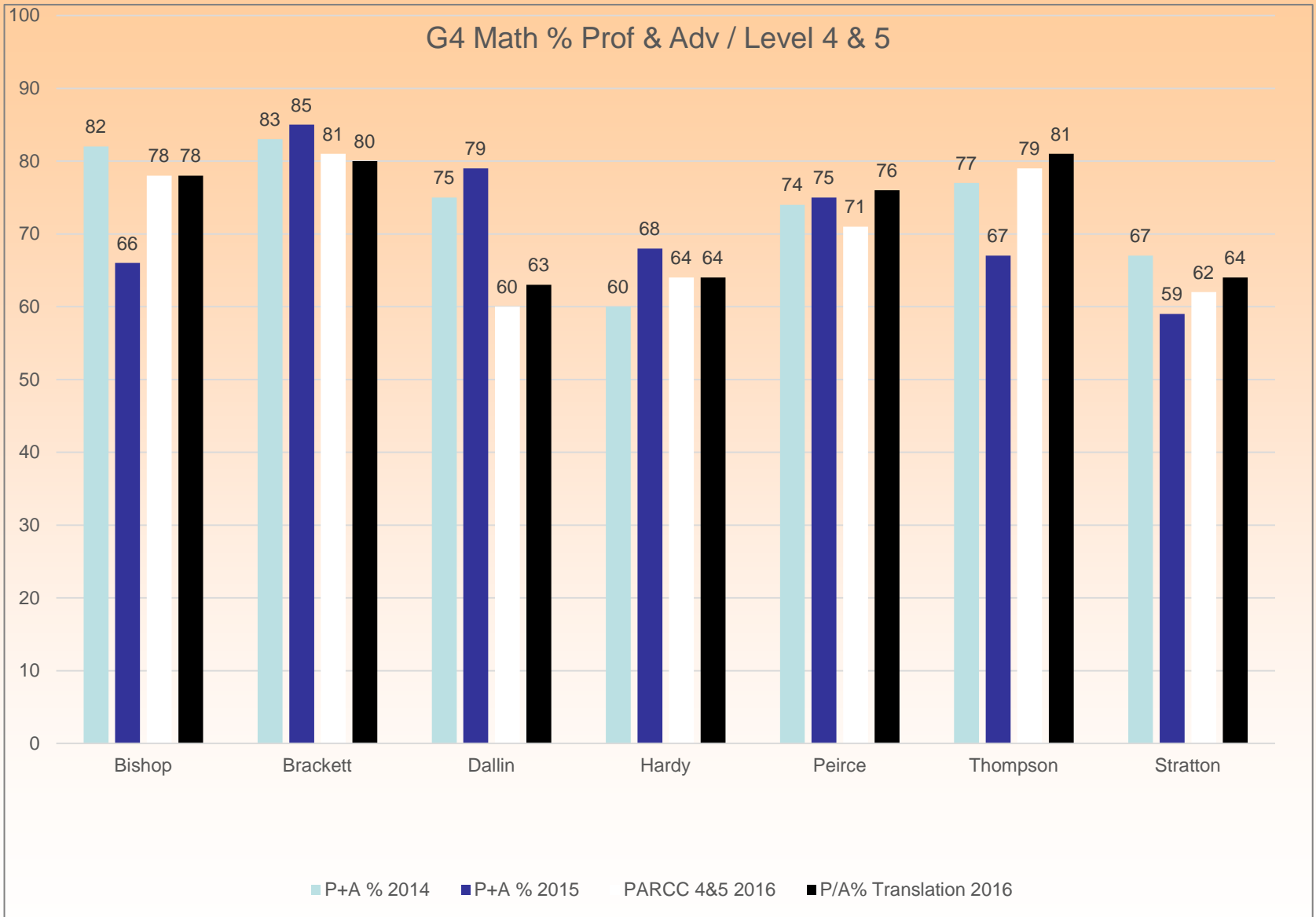


***District Mathematics
2016***

G3 Math % Prof & Adv / Level 4 & 5



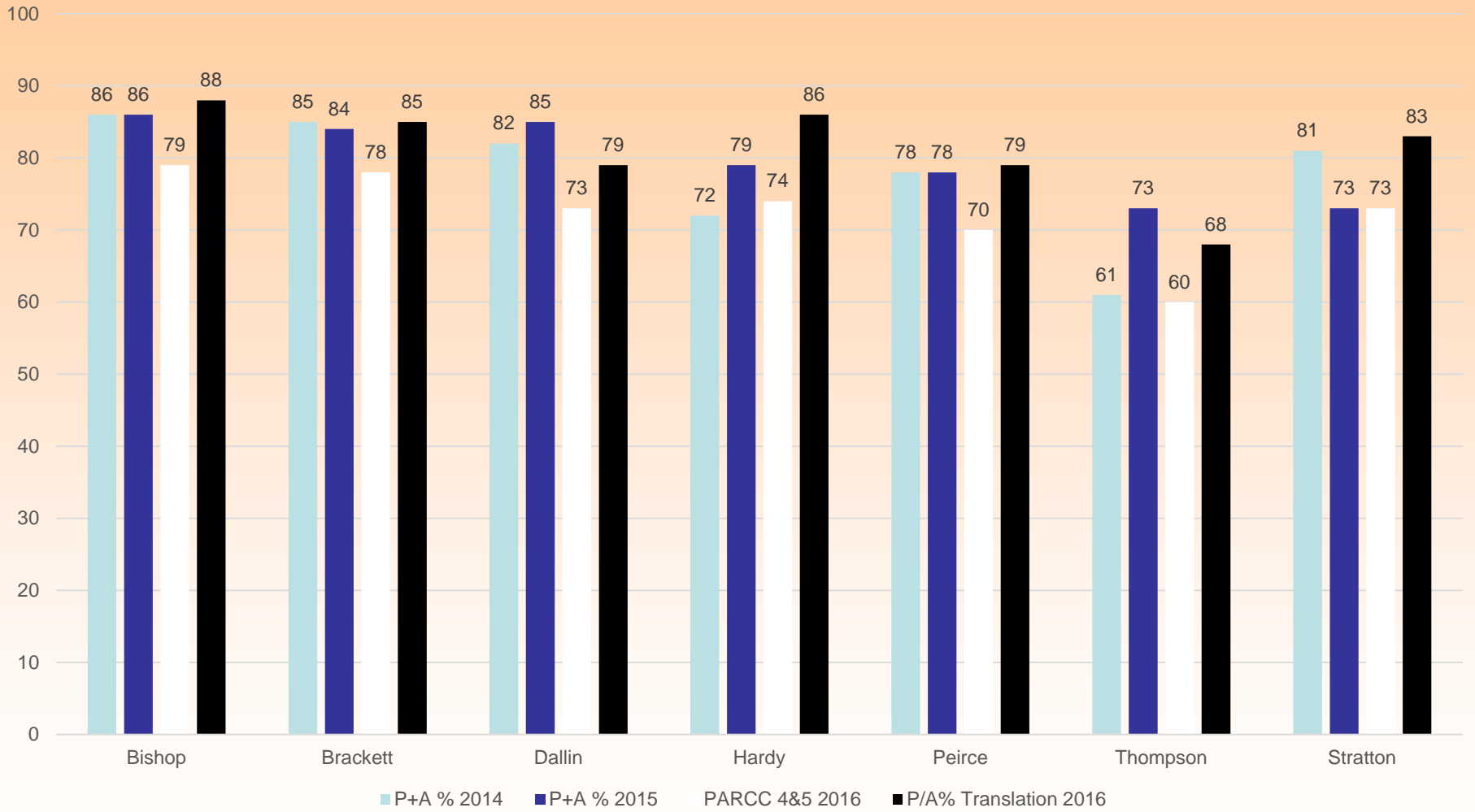
G4 Math % Prof & Adv / Level 4 & 5



Math SGP Grade 4

	2014	2015	2016
Bishop	78	66	59
Brackett	62	77.5	47.5
Dallin	47.5	42	26
Hardy	42	44.5	41
Peirce	43.5	51	57
Thompson	62.5	58.5	42
Stratton	60	56	34

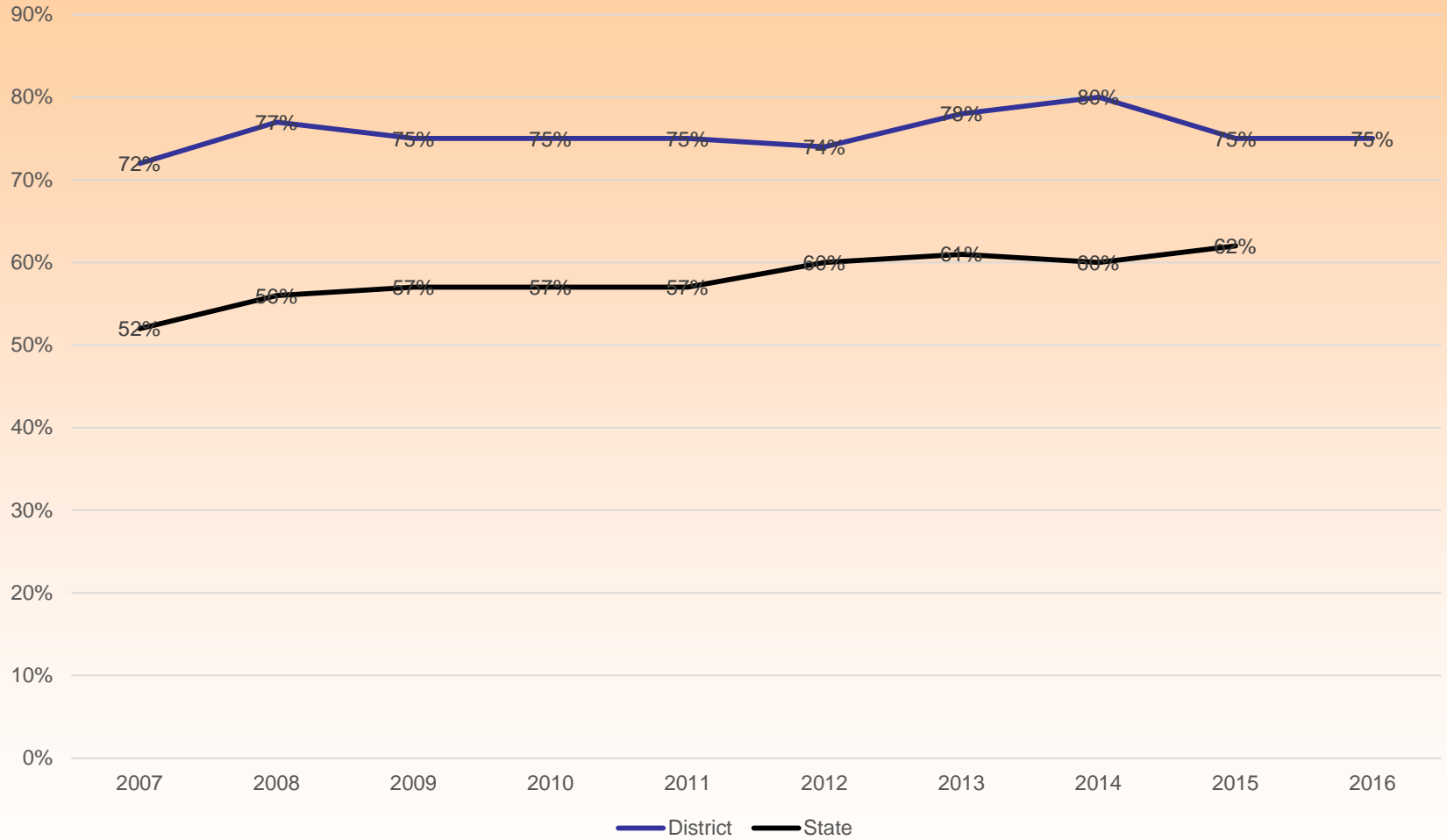
G5 Math % Prof & Adv / Level 4 & 5



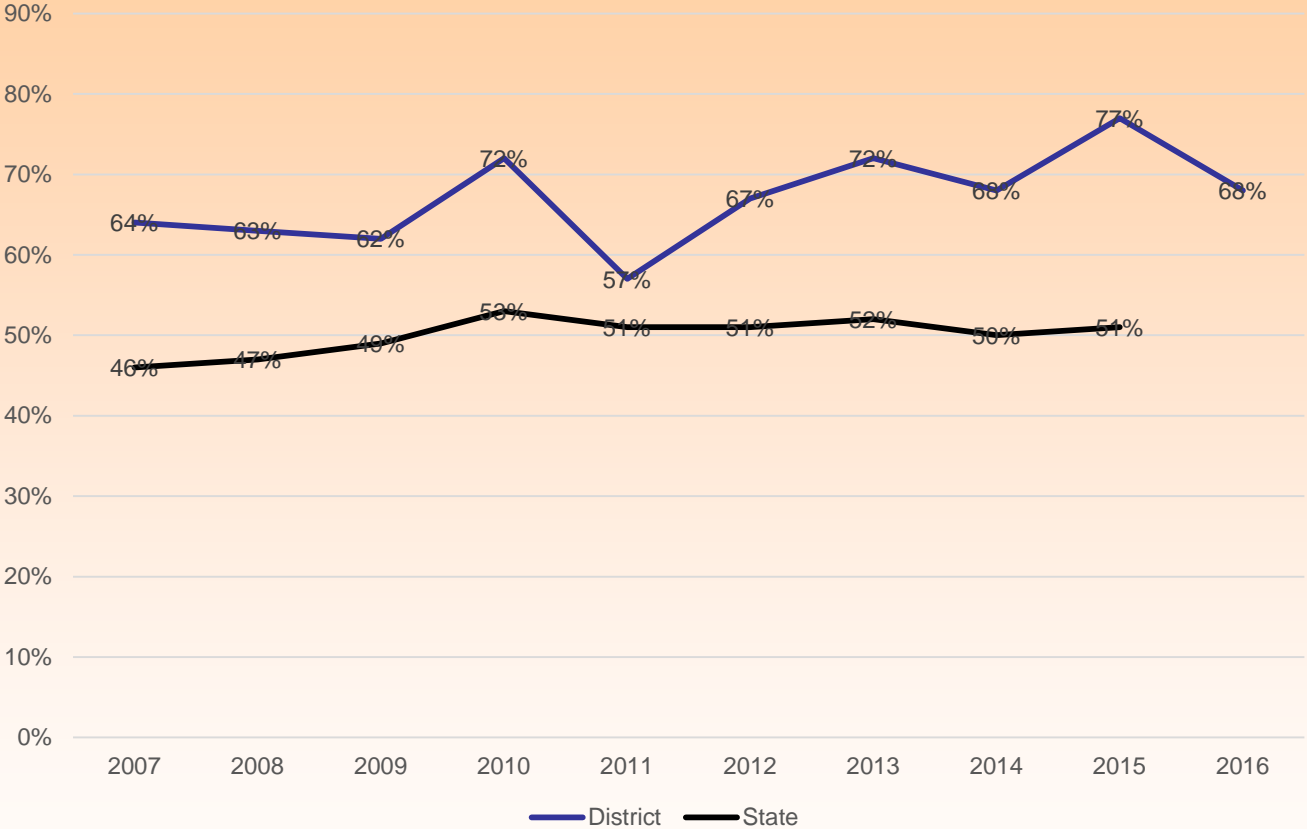
Math SGP Grade 5

	2014	2015	2016
Bishop	78	62	69
Brackett	47.5	42	40
Dallin	43.5	62.5	30
Hardy	60	54.5	59
Peirce	69	59.5	60
Thompson	44	59	35
Stratton	61	41	63

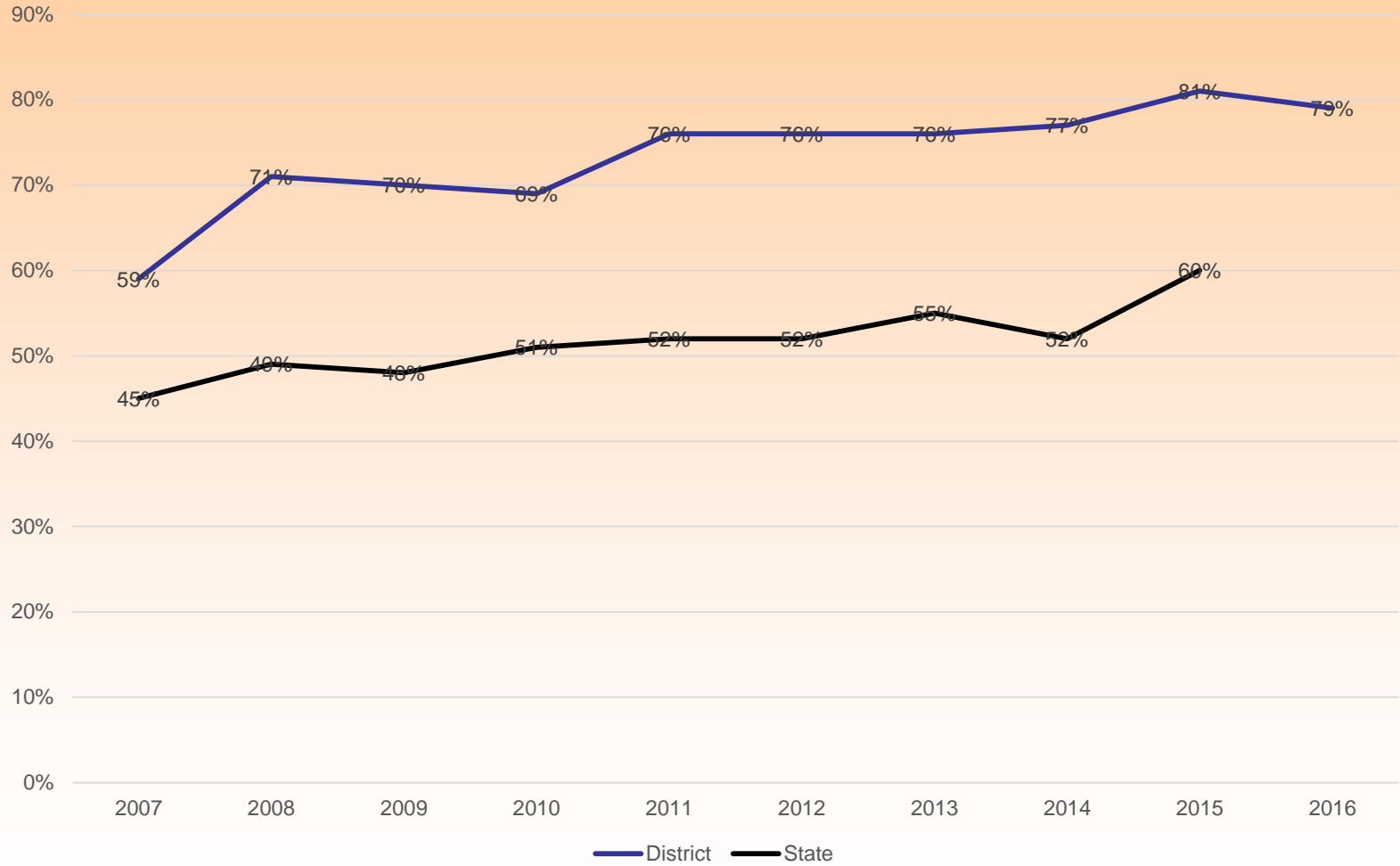
District vs. State Math Grade 6 Prof & Adv



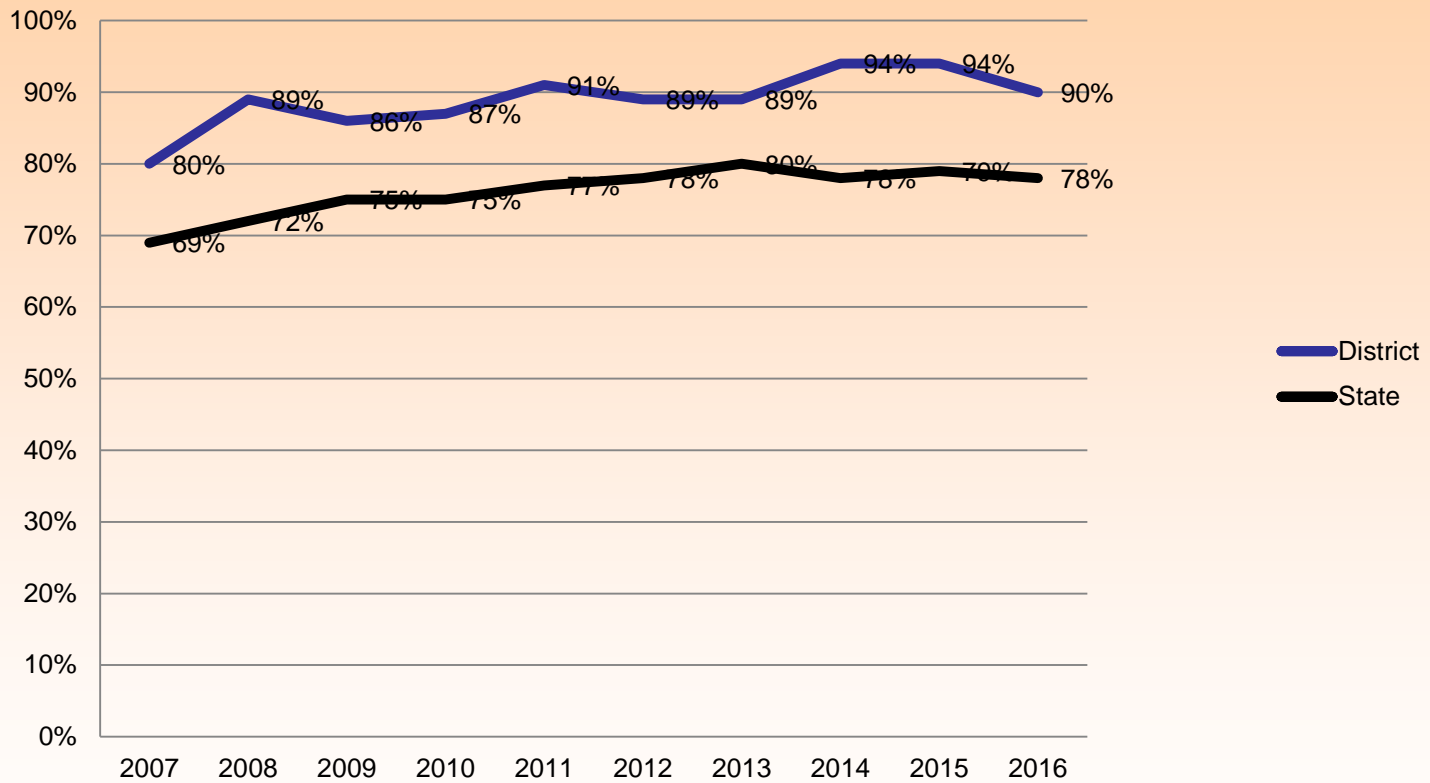
District vs. State Math Grade 7 Proficient & Advanced



District vs. State Math Grade 8 Proficient & Advanced

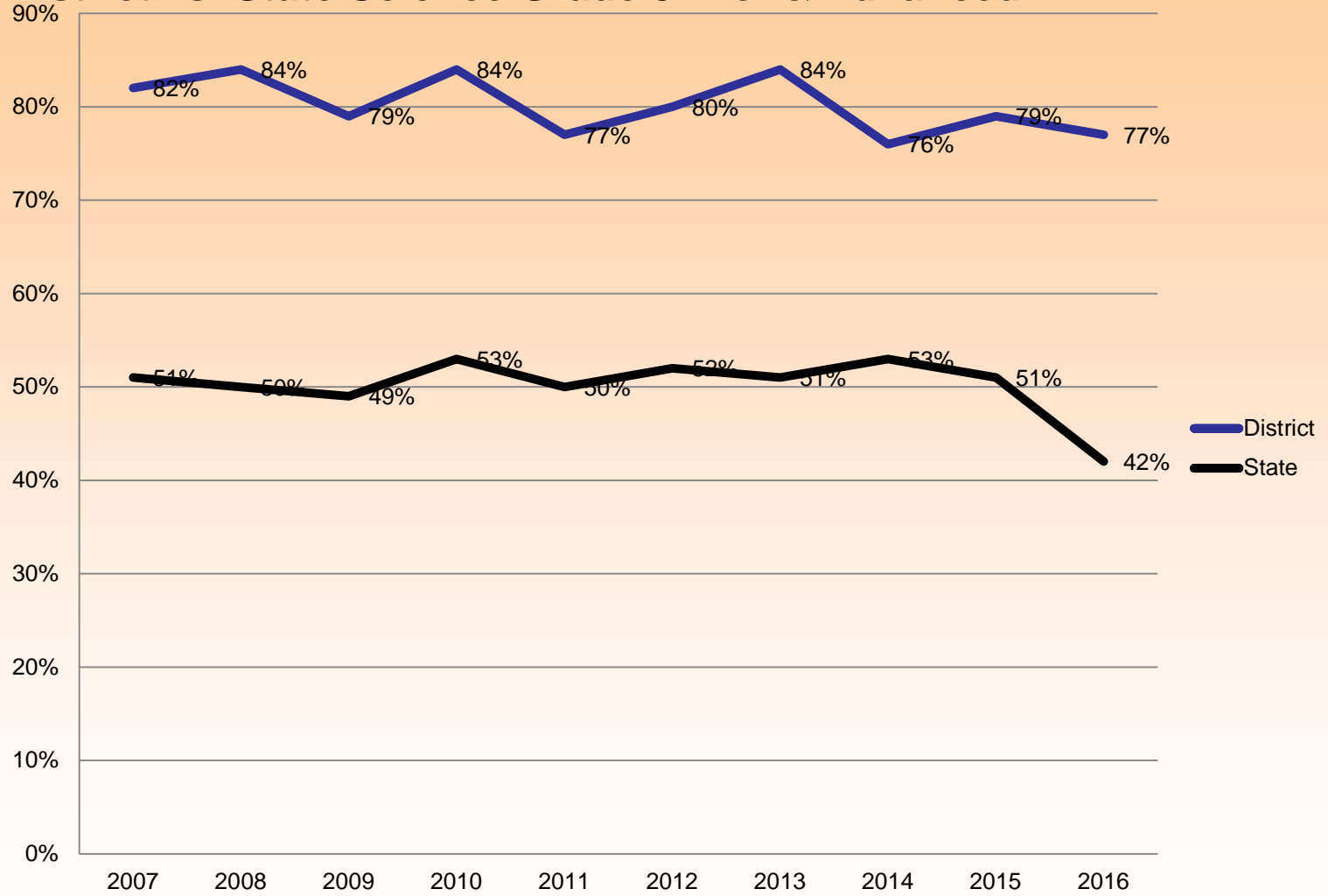


District vs. State Math Grade 10 Prof & Advanced

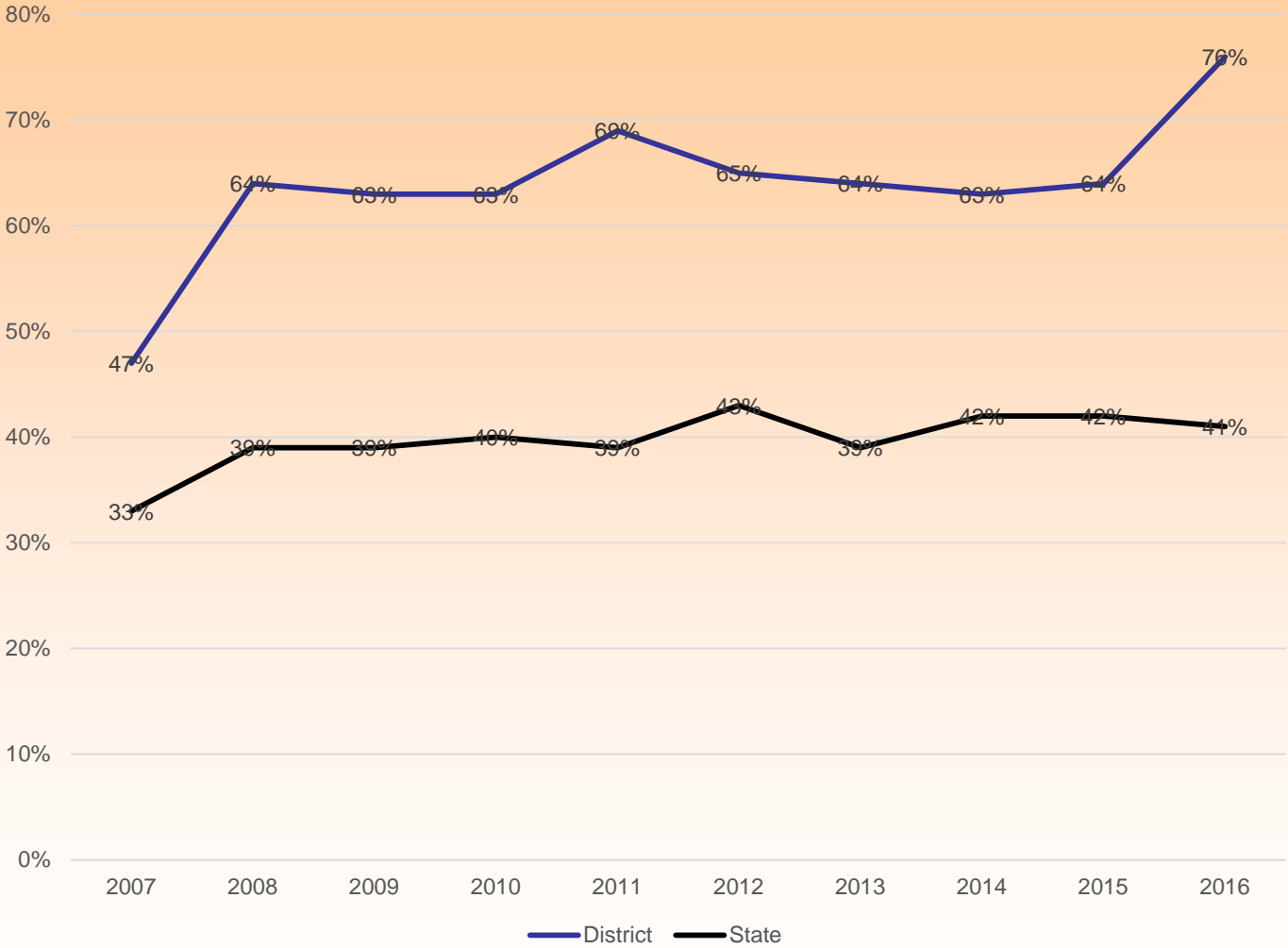


***District Science and Technology
2016***

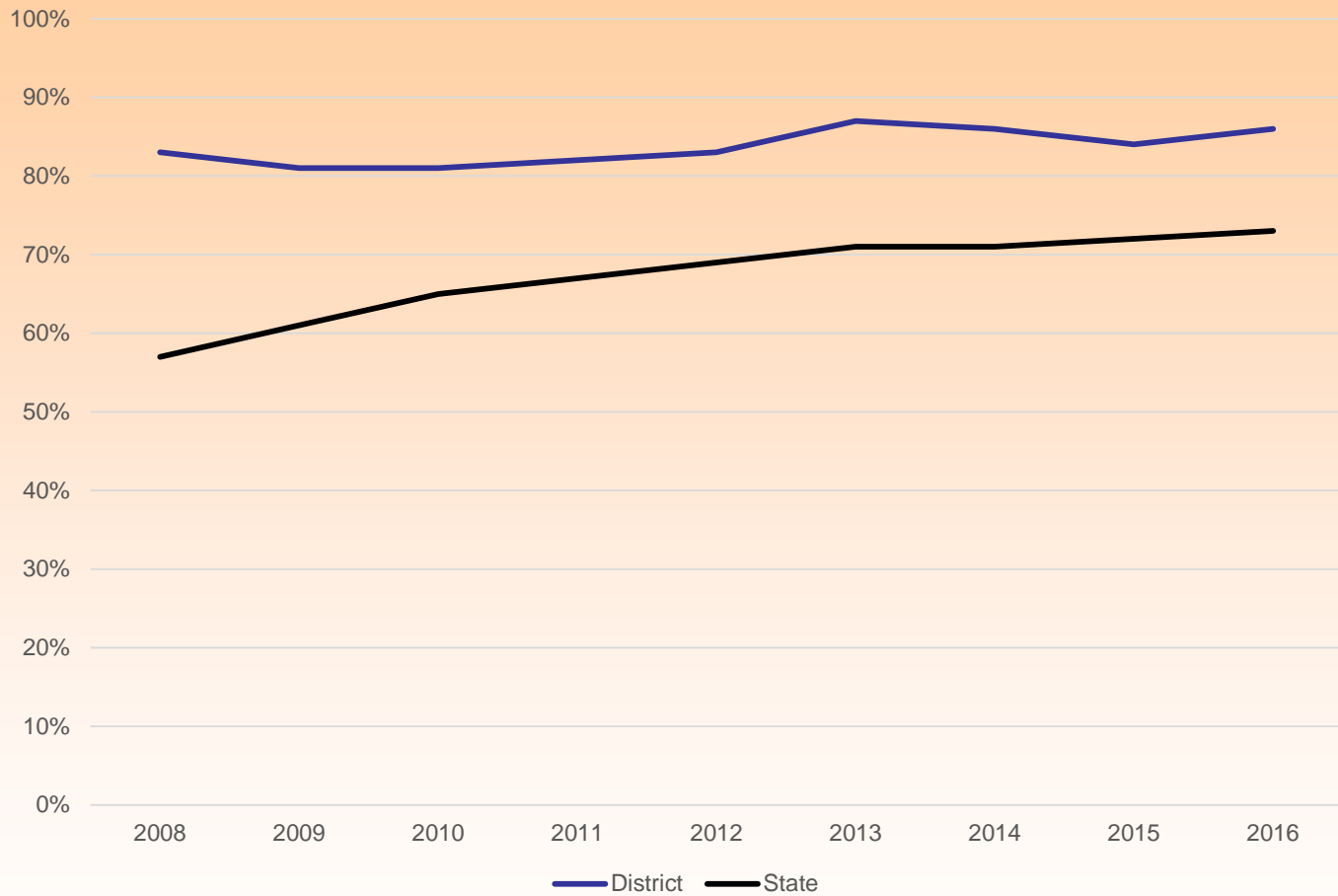
District vs. State Science Grade 5 Prof & Advanced



District vs. State Grade 8 Science Prof. & Advanced



District vs. State Grad 10 Science Proficient & Advanced



Annual PPI Over Time - AHS

	2013	2014	2015	2016
All students	71	104	71	79
High Needs Subgroup	71	100	100	71

How Cumulative PPI Is Calculated

- Weighted average
- $((\text{FY16})^4 + (\text{FY15})^3 + (\text{FY14})^2 + (\text{FY13}))/10 = \text{CUM PPI}$
- In 2016 $((79^4) + (71^3) + (104^2) + (71))/10 = \text{CUM PPI}$
- In 2015 $((71^4) + (104^3) + (71^2) + (87))/10 = \text{CUM PPI}$

AHS MCAS Results Over Time

		2013	2014	2015	2016
ELA	Adv.	71	74	79	70
	Prof	27	25	19	28
	NI	2	1	2	1
	F	0	0	0	1
Math	Adv	72	79	79	74
	Prof	20	16	15	19
	NI	6	4	5	6
	F	2	0	1	1

Presentation References

Massachusetts Department of Elementary and Secondary Education School District Profiles:

<http://profiles.doe.mass.edu/profiles/general.aspx?topNavId=1&orgcode=00100000&orgtypecode=5&>

Massachusetts Department of Elementary and Secondary Education Statewide Reports:

http://profiles.doe.mass.edu/state_report/mcas.aspx

Massachusetts Department of Elementary and Secondary Education Data Warehouse (EDW):

<https://www4.doemass.org/auth/Login>